



EXPERTS
INSIDE



DOUBLE THE DEFENSE

2 EXCLUSIVE MICROSOFT SECURITY WORKSHOPS

THREAT PROTECTION

This workshop is designed to help you evaluate and deploy advanced Microsoft Security solutions, such as **Microsoft Defender XDR** and **Microsoft Sentinel**, in your production environment to identify and address real threats and vulnerabilities.

What This Workshop Offers

By the end of this exclusive workshop, you will:

- Define your key security objectives and priorities.
- Detect threats and vulnerabilities within your production environment.
- Discover tailored solutions for identified risks.
- Receive expert guidance and support throughout the process.

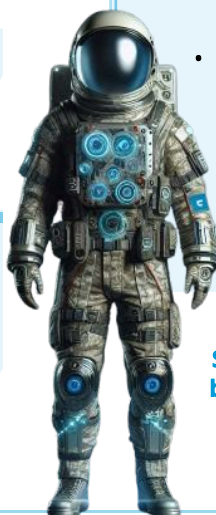
Deployment

Mandatory Modules

- Microsoft Defender Portal (Defender XDR)
- Cloud Identity Protection (Entra ID Protection, Entra Conditional Access)

Selectable Modules (Choose at least 3)

- Unified SecOps Platform (Microsoft Sentinel)
- Email Protection (Microsoft Defender for Office 365)
- Endpoint & Cloud App Protection (Microsoft Defender for Endpoint, Vulnerability Management, Cloud Apps)
- Microsoft Copilot for Security (Demo Version)



DATA SECURITY

This workshop provides a personalized introduction to **Microsoft Purview**, focusing on the specific data security risks in your environment. You'll explore complementary tools from the Purview suite and receive actionable recommendations to enhance your data security and compliance.

What This Workshop Offers

By the end of this exclusive workshop, you will:

- Define your key data security objectives and priorities.
- Detect and analyze risks in your production environment, including:
 - Stale and confidential data
 - Data loss, theft, and leakage
 - Insider risk and risky user behavior
- Learn how Microsoft Purview solutions can mitigate these risks with:
 - Data Loss Prevention
 - Information Protection
 - Insider Risk Management

Secure exclusive benefits
by joining forces with one
of Switzerland's top
Microsoft Partners.

CONTACT



Thomas Freiher
tfr@expertsinside.com

